

# UFLI Foundations Alachua County Public Schools (ACPS) Family Resources

## UFLI Foundations Family Webinar Recording

(originally aired on 12/6/2021)



Click to view the webinar.

### At-Home Reading and Spelling Practice Handout

(click [link](#) or image to download)



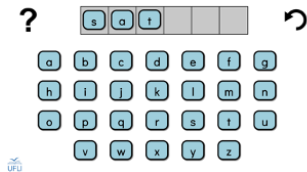
### Blendable Sounds Video

(click [link](#) or image to watch video)



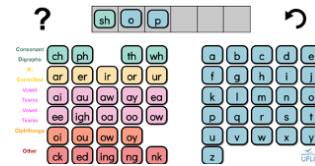
### Beginner Word Work Mat App

<https://bit.ly/WordWorkMat1>



### Intermediate Word Work Mat App

<https://bit.ly/WordWorkMat2>



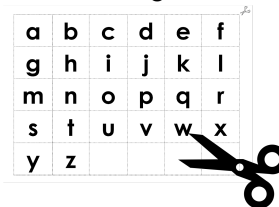
### Instructions for Word Work Mat App Tablet Use

(click [link](#) or image to download)



### Printable Letter Tiles

(click [link](#) or image to download)



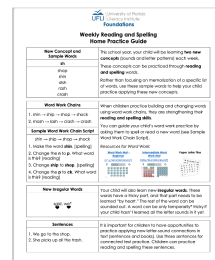
### Science of Reading Video

(click [link](#) or image to watch video)



### Weekly Home Practice Guide

(click [link](#) or image to download)





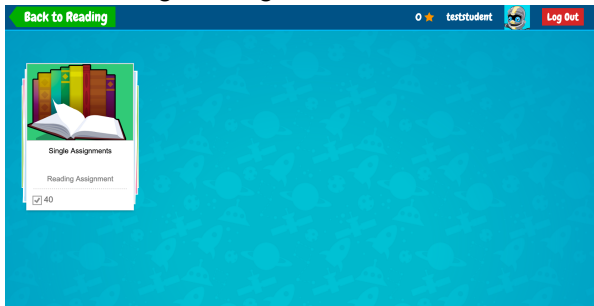
# Using Reading A - Z

## Option #1: "My Assignment"

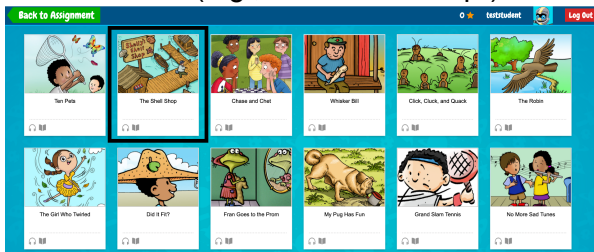
1. Click "My Assignment"



2. Click "Single Assignments"



3. Select book (e.g., "The Shell Shop")

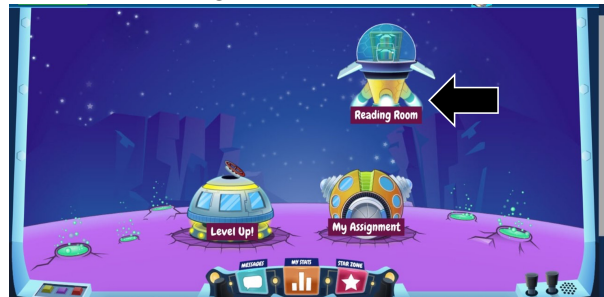


4. Read or listen to the book

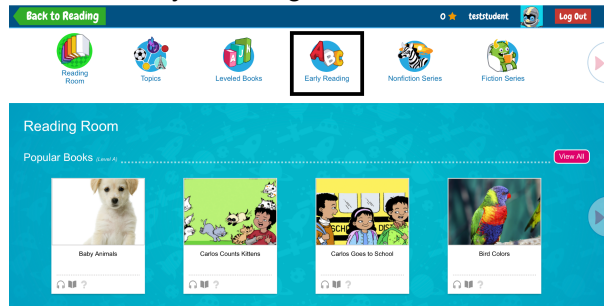


## Option #2: "Reading Room"

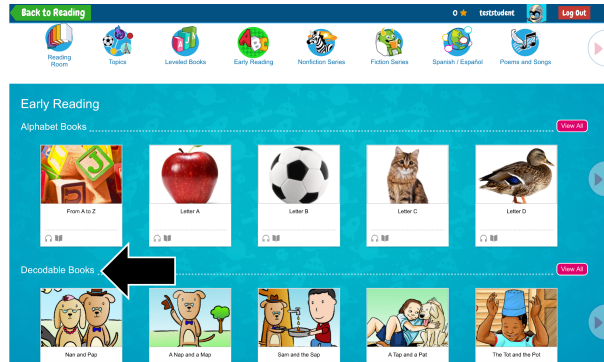
1. Click "Reading Room"



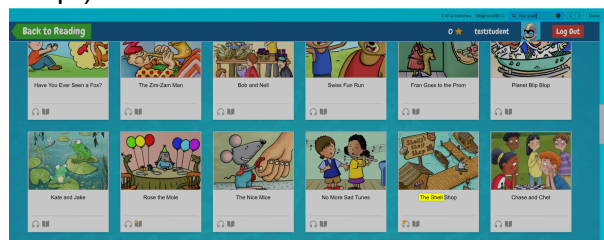
2. Click "Early Reading"



3. Click "Decodable Books" > View All



4. Search for book using title (e.g., "The Shell Shop")



5. Read or listen to the book (see images on left)